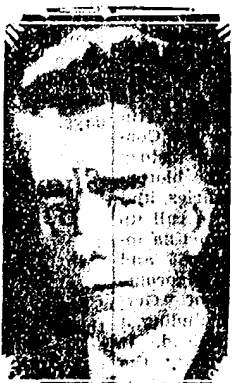


TODAY'S RADIO BROADCASTS

CHICAGO WAVE LENGTHS.
 W-G-N-720. WAAF-920.
 WMAQ-970. WCFL-970.
 WBBM-770. KYW-1020.
 WENR-870. WJJD-1130.
 WLS-870. WGES-1360.

TODAY'S FEATURES



ERIC DE LAMARTER.
 [Underwood & Underwood photo.]

7 A. M.
 W-G-N—"Good Morning," a musical program; time signals; weather reports.
 WLS—Hank and Hiram.

7:30 A. M.
 WLS—Morning devotions.

8:30 A. M.
 WLS—Harmony Ranch.

9 A. M.
 W-G-N—The "Keep Fit" club with Capt. Paul Fokarty.

9:15 A. M.
 W-G-N—Robert Ball, readings; market reports.
 WLS—Hiram's Harmonica club.

9:30 A. M.
 W-G-N—Len Salvo, organist; weather forecast.
 KYW—Morning Parade.
 WCFL—Musical.
 WMAQ—Singing Strings.
 WLS—Friendly Hour.

9:45 A. M.
 WAAF—Organ Melodies.

10 A. M.
 W-G-N—Movie personalities, with Francis X. Bushman and Elizabeth Hines.
 WCFL—Popular music.
 WAAF—Memory Lane.
 WMAQ—Galaxy of stars.
 KYW—Four southern singers.
 WBBM—New York Philharmonic Children's symphony.

10:15 A. M.
 W-G-N—The Grand Old Hymn, Grain markets.
 WAAF—Estelle Barnes, pianist.
 KYW—The Voss Family.
 WMAQ—Spanish Idylls.

10:30 A. M.
 W-G-N—Art Kahn, pianist.
 WENR—Sonata recital.
 KYW—Detectives Black and Blue.
 WBBM—String quartet.
 WCFL—Variety program.

10:45 A. M.
 W-G-N—Margaret Ilbhe, soprano.
 WMAQ—Talk, J. F. O'Keefe.

11 A. M.
 W-G-N—The Rondoliers.
 WAAF—Hawaiian Echoes.
 WBBM—Vincent Travers' orchestra.
 WENR—Pietro Yon, organist, and Bruno Lubate, oboist.

11:15 A. M.
 WMAQ—Parent-Teachers' program.
 KYW—Genie Fonariova, soprano.
 WBBM—Food Flashes, with Virginia Clark.

11:30 A. M.
 W-G-N—Market report; digest of the day's news.
 WBBM—Jerry Sullivan, songs.
 WMAQ—Trade Revival Campaign, American Legion.
 WENR—The Morin Sisters.
 KYW—National Farm and Home Hour.

11:45 A. M.
 W-G-N—The Rondoliers; Dan Baker, tenor.
 WBBM—Ensemble.
 WMAQ—Rex Battle's orchestra.

NOON.
 W-G-N—Midday service; Albert J. Brumbaugh, Dean of the College, University of Chicago.
 WMAQ—Postmaster General James A. Farley, talk.
 WCFL—Dr. Springer's Forum.
 WBBM—Ensemble.
 WAAF—Symphonie hour.

12:15 P. M.
 WMAQ—Ted Black's orchestra.

WCFL—Luncheon music.

12:30 P. M.
 W-G-N—Grain markets; Palmer House ensemble.
 WLS—Musical program.
 WBBM—Chicago Hour.
 WMAQ—Vic and Sade.
 KYW—Ted Black's orchestra.

12:45 P. M.
 W-G-N—Blackstone Hotel ensemble.
 WBBM—Harold Knight's orchestra.

12:40 P. M.
 KYW-WMAQ—Metropolitan Opera company in the opera "L'Africain."

1 P. M.
 W-G-N—Stevens Hotel ensemble.
 WAAF—Hoosier Philosopher.
 WLS—"Check" Stafford.

1:15 P. M.
 W-G-N—Palmer House ensemble.

WCFL—"The Human Side of New England Poets and Novelists," by Mrs. Frances A. Somerville.

WLS—Maple City Four.

1:30 P. M.
 W-G-N—Pat Kennedy, tenor, and Len Salvo, organist.
 WBBM—Artists' Recital.
 WLS—Debate—Kent Law college vs. Indiana university.

1:45 P. M.
 W-G-N—Stevens Hotel ensemble.

2 P. M.
 W-G-N—Palmer House ensemble.

WCFL—Red Hot and Low Down.

WLS—Merry-go-round.

WBBM—Dancing Echoes.

2:15 P. M.
 W-G-N—Stevens Hotel ensemble.
 WAAF—Jimmy Kozak, pianist.
 WBBM—American Household Institute.

2:30 P. M.
 W-G-N—Blanche Thompson, soprano.
 WBBM—Cadets' quartet.

2:45 P. M.
 W-G-N—Art Kahn, pianist.
 WBBM—Avery House.

3 P. M.
 W-G-N—The Rondoliers and Mark Love, basso.

Noon—W-G-N—Midday service, with Albert J. Brumbaugh, dean of the college, University of Chicago.

12:40 p. m.—KYW and WMAQ—L'Americana, an opera, with the Metropolitan Opera company, featuring Rosa Ponsello and Nina Morgana, sopranos.

6 p. m.—W-G-N—Uncle Quin's Scalawags, with Jean, Donny Dreamer, and Wishbone; "Mysterious Doings in Chinatown."

7:30 p. m.—KYW—The Boston Symphony orchestra, Arnold Schoenberg, conductor.

7:30 p. m.—W-G-N—Hal Kemp's Kapers, with the orchestra, "Skinny" Ennis and Bob Allen.

8:15 p. m.—W-G-N—The Chicago Symphony orchestra, conducted by Eric DeLamarter, with Edward Moore, CHICAGO TRIBUNE music critic, commentator; announced by Pierre Andre. The complete program:

The overture to "Mignon."
 —Thomas.
 Symphony No. 6, "Pathetic," B minor, Opus 74—Tschalkowsky.
 Suite, "Through the Looking Glass."
 —Taylor.
 1A.—Dedication.
 1B.—The Garden of Live Flowers.
 II.—Jabberwocky.
 III.—Looking Glass Insects.
 IV.—The White Knight.

9:30 p. m.—WLS—The National Barn dance.

10:30 p. m.—W-G-N—Three and a half hours of Chicago's finest dance music with orchestras led by Wayne King, Jan Garber, Clyde McCoy, Richard Cole, Hal Kemp, Tom Gentry, and Charlie Agnew.

WLS—Sniffin' Thru.
 WBBM—Syncopators.

3:15 P. M.
 WBBM—Musical.

3:30 P. M.
 W-G-N—Len Salvo, organist.
 WBBM—Ensemble.
 WENR—Clyde Lucas' orchestra.

3:45 P. M.
 W-G-N—The Rondoliers.

4 P. M.
 W-G-N—Bob Forsans, tenor.
 WENR—Concert favorites.
 WBBM—Pancho's orchestra.
 KYW—Musical Comedy Favorites.

4:15 P. M.
 W-G-N—Rondoliers.
 WENR—Babes in Hollywood.
 WMAQ—The Lady Next Door.
 WCFL—Opera gems.

4:30 P. M.
 W-G-N—Len Salvo, organist.
 WMAQ—The Three Scamps.
 WENR—The Neil Sisters.

4:45 P. M.
 W-G-N—Jane Carpenter, pianist.
 WMAQ—Arlene Jackson, songs.
 WENR—Grandpa Burton.
 WBBM—Joel Lay, baritone.

5 P. M.
 W-G-N—Make Believe Melody Land.
 WBBM—"Meet the Artist," interview.
 WENR—Al Pearce and His Gang.
 WMAQ—Health-o-batics.
 KYW—Personalities in Paint.

5:15 P. M.
 W-G-N—"Tip-Top" circus.
 KYW—Xavier Cugat's orchestra.
 WBBM—"Tarzan Adventure," WMAQ—Carlos Molina's orchestra.

5:30 P. M.
 W-G-N—Penn and Willard, vocal duo.
 WBBM—Jack Armstrong.
 KYW—Uncle Bob's club.
 WENR—Mary Small.
 WMAQ—Richard Hiram's orchestra.

5:45 P. M.
 W-G-N—"Little Orphan Annie."
 WMAQ—Nyo Mayhew's orchestra.
 WBBM—Cadet's quartet.

6 P. M.
 W-G-N—Uncle Gulu, Jean, Donny Dreamer, and Wishbone.
 KYW—Pinto Pete.
 WBBM—Sportcast.

6:15 P. M.
 W-G-N—Dick Steele, the boy reporter.
 WBBM—Tito Guizar, tenor.
 WENR—Dan Russo's orchestra.

6:30 P. M.
 W-G-N—John Harrington, the sport reporter.
 WCFL—Circus Children.
 WMAQ—Circus Days.
 WBBM—Dance orchestra.
 WENR—Benny Kyo's orchestra.

6:45 P. M.
 W-G-N—Tom, Dick, and Harry.
 WBBM—Mixed quartet.
 WMAQ—Noble Sissle's orchestra.
 KYW—Blue Voices.

7 P. M.
 W-G-N—Palmer House ensemble.
 WBBM—Leon Belasco's orchestra.
 WLS—Kaltenmeyer's kindergarten.
 WMAQ—"Economics and the New Deal," Wesley G. Mitchell.
 KYW—Stephen C. Foster memorial program.

7:15 P. M.
 W-G-N—Lawson Y. M. C. A. Glee club.
 WCFL—Eddie Varzoca's orchestra.

7:30 P. M.
 W-G-N—Hal Kemp's orchestra.
 WMAQ—Caro Lamoureux, soprano; Ludovic Hutot, tenor.
 KYW—Boston Symphony orchestra.
 WBBM—Cadet's quartet.
 WLS—Barn Dance music.

7:45 P. M.
 WBBM—Scrappy Lambert and Billy Hillpot with Nat Shilkret's orchestra.

8 P. M.
 W-G-N—Tomorrow's Tribune.
 WMAQ—Jamboree.
 WBBM—Philadelphia Symphony orchestra.
 WLS—The Westerners.

8:05 P. M.
 W-G-N—Headlines of Other Days.

8:15 P. M.
 W-G-N—Chicago Symphony orchestra, directed by Eric De Lamarter.
 WLS—Hugh Aspindwell and Ronello Fay.

WBBM—Stoopa's Joe and Budd; Vera Van and Jacques Renard's orchestra.

8:30 P. M.
 WMAQ—Harry Woodring, assistant secretary of war, talk.
 WBBM—Edward De Anna's band.

9 P. M.
 WLS—Pathfinder Review.
 WBBM—Byrd two way broadcast.
 WMAQ—B. A. Rolfe's orchestra.

9:30 P. M.
 WLS—National Barn Dance.
 KYW—Leon Bloom's orchestra.

9:45 P. M.
 WBBM—Henry Busse's orchestra.

10 P. M.
 W-G-N—Clyde McCoy's orchestra.

WMAQ—One Man's Family.
 WCFL—Pingree C. Hughes, insurance records.

10:15 P. M.
 W-G-N—Charlie Agnew's orchestra.

10:30 P. M.
 W-G-N—Wayne King's orchestra.

10:50 P. M.
 W-G-N—Jan Garber's orchestra.

11:10 P. M.
 W-G-N—Richard Cole's orchestra.

11:30 P. M.
 W-G-N—Tom Gentry's orchestra.

11:50 P. M.
 W-G-N—Charlie Agnew's orchestra.

12:10 A. M.
 W-G-N—Jan Garber's orchestra.

12:30 A. M.
 W-G-N—Richard Cole's orchestra.

12:50 A. M.
 W-G-N—Hal Kemp's orchestra.

1:10 A. M.
 W-G-N—Charlie Agnew's orchestra.

1:30 A. M.
 W-G-N—Clyde McCoy's orchestra.

1:45 A. M.
 W-G-N—Hal Kemp's orchestra.